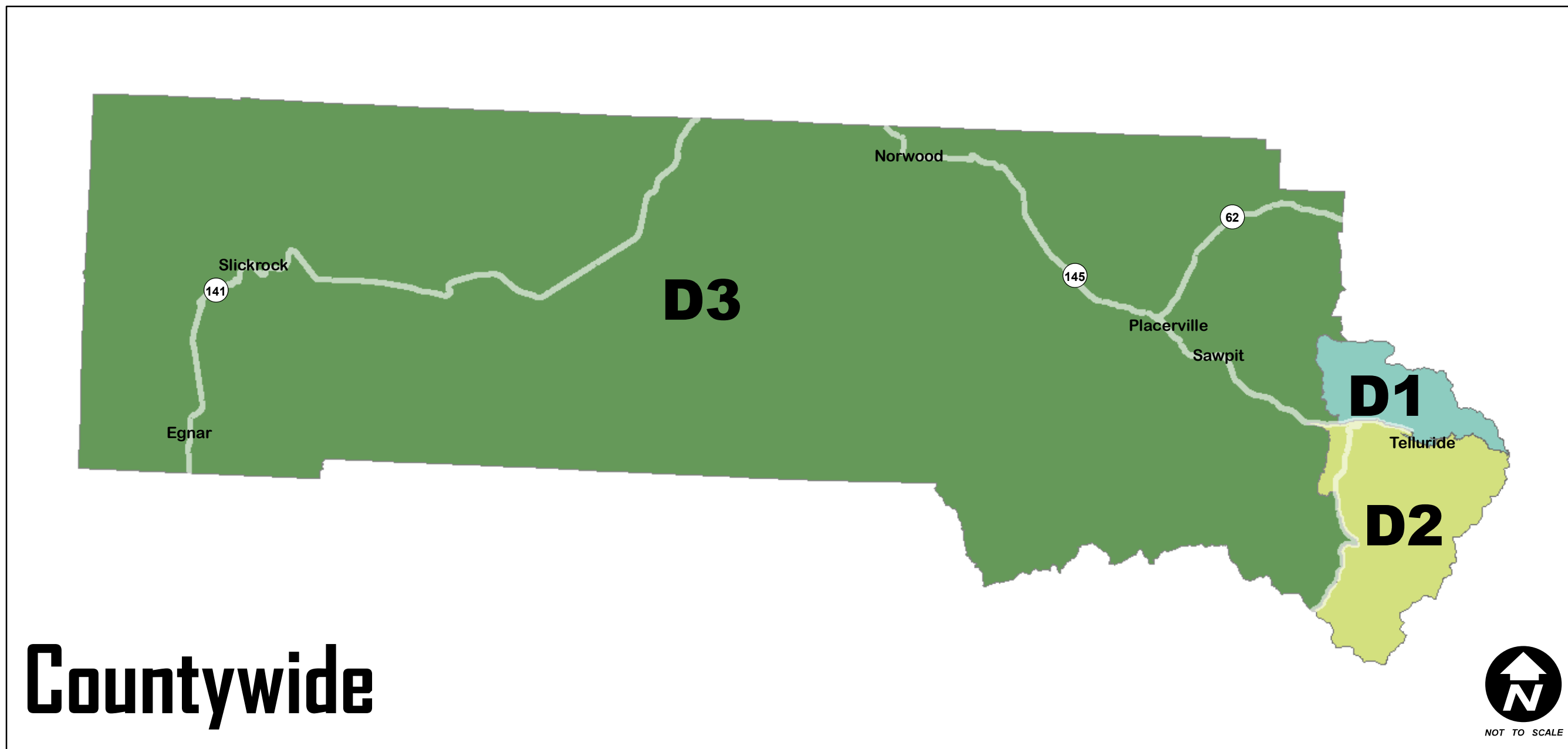
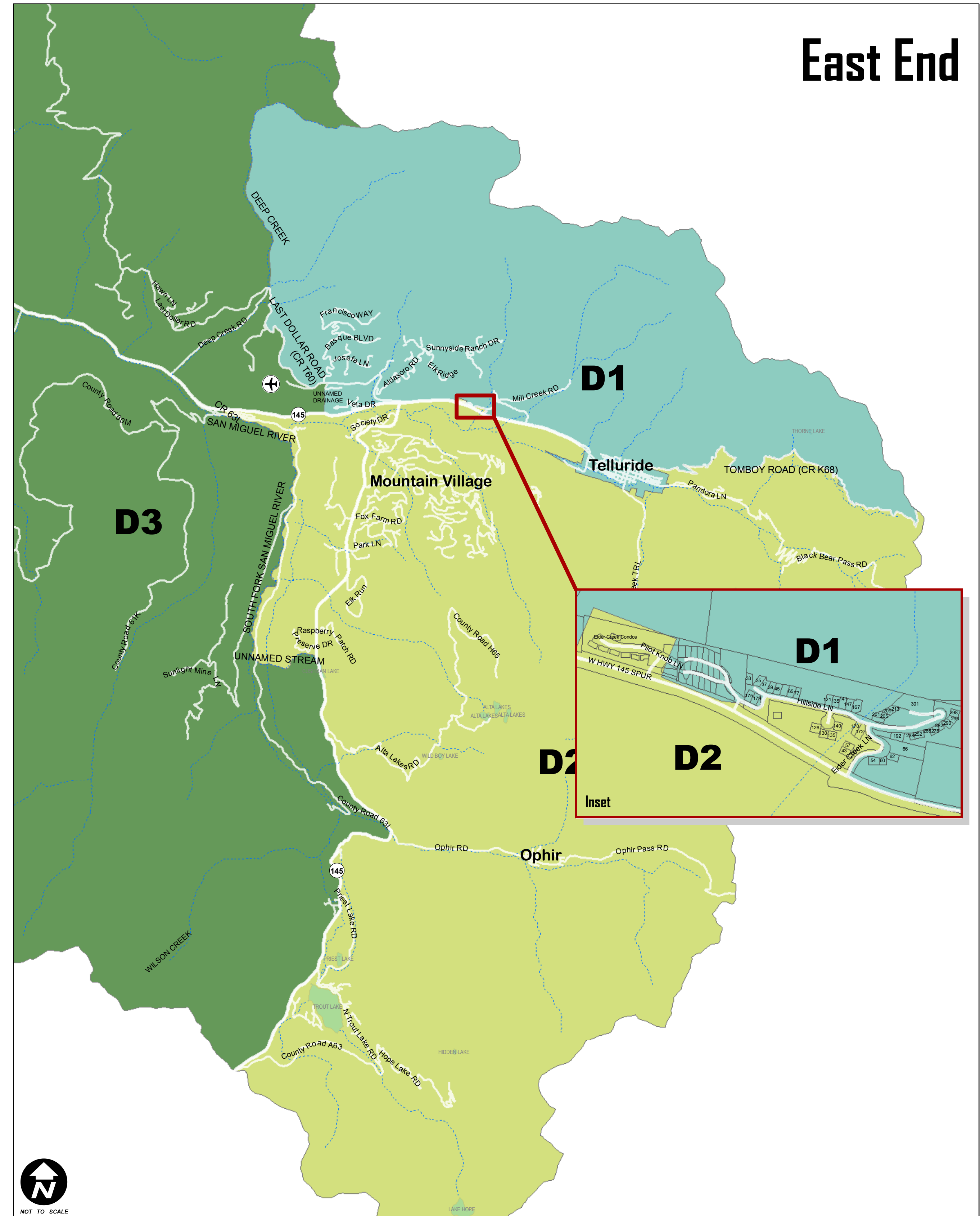


# SAN MIGUEL COUNTY, COLORADO REDISTRICTING 2011



| POPULATION (2010 Census) 2011 DISTRICTS | POPULATION (2000 Census) EXISTING DISTRICTS |
|---|---|
| Total Population = 7359                 | Total Population = 6594                     |
| 2497 - District 1                       | 2199 - District 1                           |
| 2459 - District 2                       | 2196 - District 2                           |
| 2403 - District 3                       | 2199 - District 3                           |
|   | refer to BOCC Resolution #2001-54           |

**Population Data**



Geographic Information Systems  
 Prepared by the San Miguel County GIS Department (HW) July 12, 2011  
 Census data provided by the US Census Bureau, 4/11.  
 heathen@sanmiguelcounty.org  
 www.sanmiguelcounty.org

**STATUTORY REQUIREMENT FOR REDISTRICTING**  
 Colorado Revised Statute Section 30-10-306 (4) states that "...after each federal census of the United States, each district shall be established, revised, or altered to assure that such districts shall be a nearly equal in population as possible based on such census..." C.R.S. Section 30-10-306 (1) further states that the districts should be "compact." The redistricting must be completed by September 30 of the odd-numbered year following the census, and a Public Hearing must be held no less than 30 days before adopting a resolution to change the boundaries